



element  
33 series tables





Nesting tables with locking casters make reconfiguration a breeze, while modesty panels create privacy.



**33TC2460T22NE-3P**

Element 24x60" rectangular table with 22" nesting T-bases and mesh modesty panels.

3P: 3mm PVC edge

lam: Wilsonart 7925-38

Monticello Maple

3P edge: F3025-2 Blonde

Maple 2 Flat

base: 06 Structured Concrete



Element's smooth low profile base creates a clean, contemporary look in the conference room.



**33BT3084T26-3P**

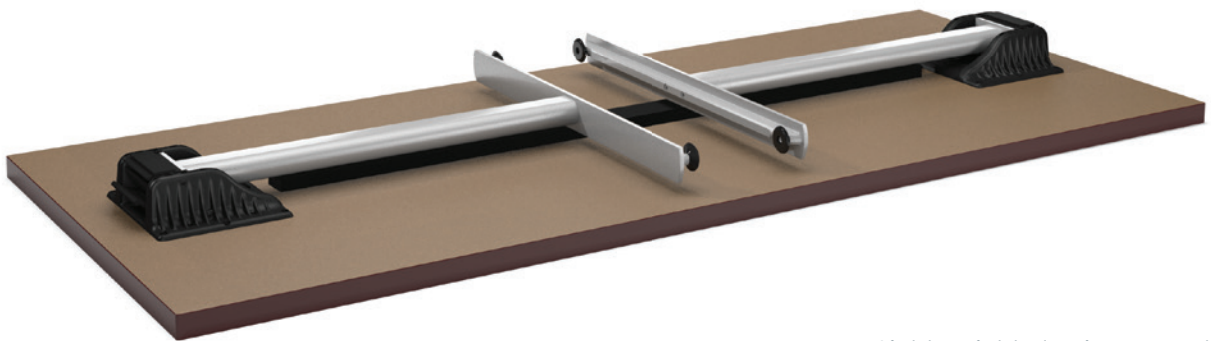
Element 30x42x84" boat-shaped table with 26" T-bases and Villa power unit.

3P: 3mm PVC edge

lam: Pionite MT280 Rocky Road

3P edge: R3026 Cafelle Reed

base: 35 Sand



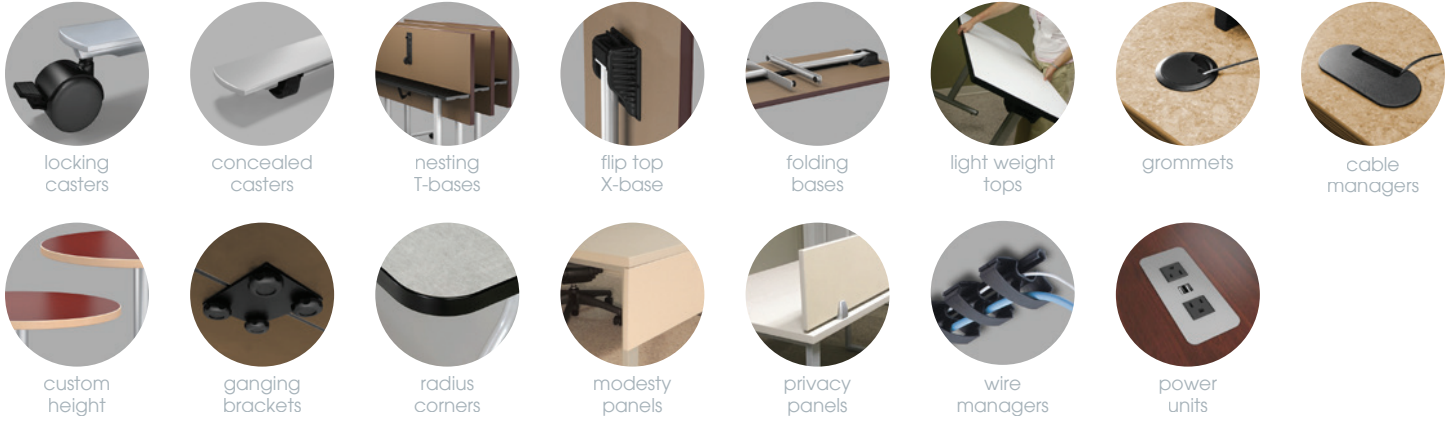
Light weight aluminum construction makes Element a great folding solution.

Pair it up with light weight tops to create tables that are much easier to handle than standard product.

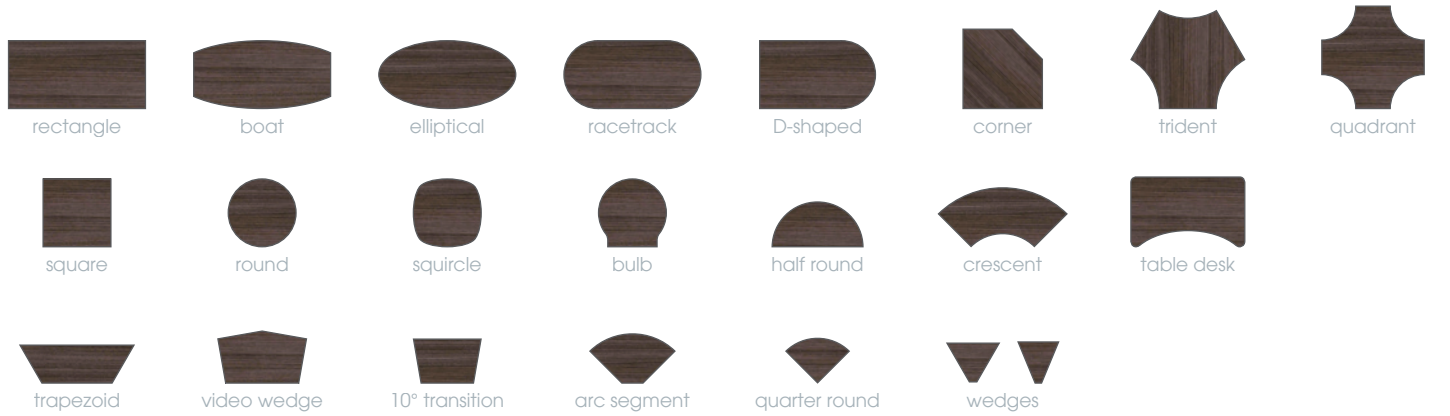
element bases



## element table options



## element top shape offering



## element edge offering



tableX

[tablex.com/element](http://tablex.com/element)

877.481.1177

Element tables  
© 2018 TableX, LLC  
Form # TXBR-ELE-18



**33TC3072T26FD-3P-RC**  
Element 30x72" tables with 26" wide folding T-bases.

**33RD36X32-3P**  
Element 36" round tables with 32" wide X-bases.

3P: 3mm PVC edge  
RC: radius corners

lam: Nevamar S-5-53T Freshfields  
edge: 10776 Kensington Maple  
base: 24 Linen