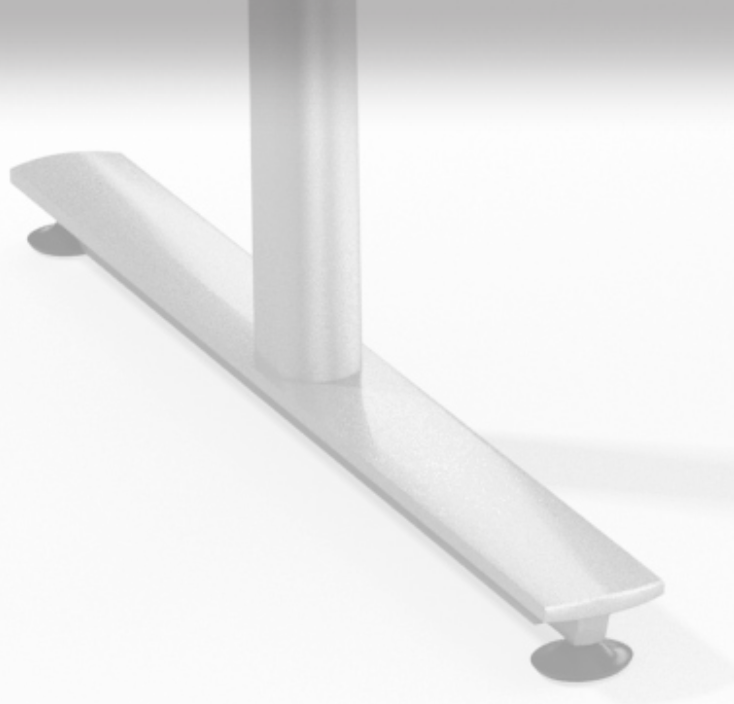


tableX



element
tables



A smooth low profile that
creates a clean and
contemporary look in the
conference room.





Light weight aluminum construction makes Element a great folding solution. Pair it up with TableX light weight tops to create tables that are much easier to handle than standard product.



base offering



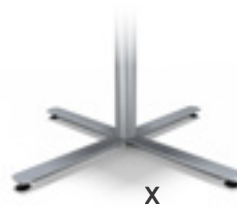
T



TOS



TT



X

options



levelers



locking casters

conference



rectangle

W: 42-48"
L: 84-144"



boat

W: 42-48"
L: 84-144"



racetrack

W: 36-48"
L: 72-144"



ellipse

W: 30-48"
L: 54-144"



square

W: 48"



round

W: 48-60"

training tables



rectangle

W: 18-36"
L: 36-96"



half round

W: 24-36"
L: 48-72"



trapezoid

W: 24-36"
L: 48-72"



crescent

W: 24-30"
L: 75-94"



video wedge

W: 20-36"



10° transition

W: 20-36"



square

W: 24-42"



round

W: 24-48"



arc segment

W: 20-36"



quarter round

W: 20-36"



60° wedge

W: 20-36"



45° wedge

W: 20-36"

references

cover

24x60" rectangular with 22" nesting T-bases. Laminate: TX061 Blond Maple, Edge: F3025 Flat Blond Maple, Bases: 06 Structured Concrete.

top of page 2

30x42x84" boat shape with 26" T-bases and Villa power/data unit. Laminate: Pionite MT280 Rocky Road, Edge: R3026 Reed Retro Mahogany, Bases: 35 Sand.

bottom of page 2

30x42x84" boat shape with 26" T-bases. Laminate: Wilsonart 7960K-18 Studio Teak, Edge: 3021 Espresso, Bases: 21 Silver Frost.

top of page 3

30x72" rectangular with radius corners and folding 26" T-bases; 36" round with 26" X-base. Laminate: Nevamar S-5-53T Freshfields, Edge: WM791 Hardrock Maple, Base: 24 Linen.

bottom of page 3

30x60" rectangular with folding 26" T-bases. Laminate: Wilsonart 7960K-18 Studio Teak, Edge: 3021 Espresso, Bases: 21 Silver Frost.

