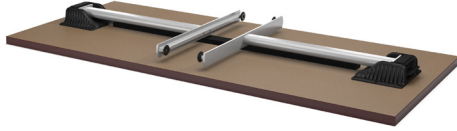


tableX



folding
tables

single T folding

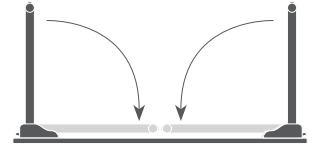


rectangle

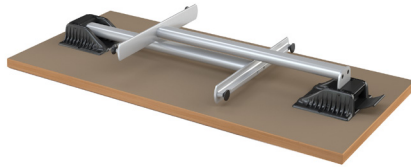


racetrack

Rectangular and racetrack tables 60" and longer use two standard folding mechanisms. Bases fold toward one another and end up toe-to-toe for a total thickness of 4.75". Six of these tables will fit on a standard table cart.

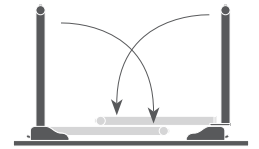


single T short-folding

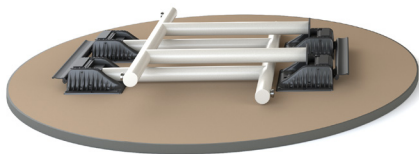


rectangle

Rectangular tables shorter than 60" use a short-folding mechanism. Bases fold one over the other for a total thickness of 6.75". Four of these tables will fit on a standard table cart.

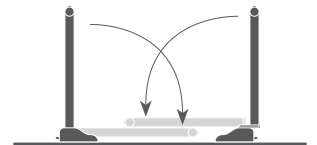


double T short-folding



round

Large round tables use a double-T short-folding mechanism. Bases fold one over the other for a total thickness of 6.75". Four of these tables fit on a standard table cart.



tablex.com/folding
877.481.1177

Folding tables
© 2021 TableX, LLC
Form # TXBR-FD-21



STC-TC60
01TC2460T20FD-3P-RC
Folding table cart with six Foundation
24x60" rectangular tables with 20"
wide folding T-bases.

RC: radius corners

cart: 01 Structured Black
3P edge: TX108 Cashew Rift
base: 21 Silver Frost