

tableX



elite
tables





A wide range of top shapes allow you to create a workspace that fits your unique needs.



08TR4824TOS18-3P-GN
08TC2436T22-3P-GN
08BU3624X32-3P-GN

Elite trident, rectangle, and bulb tables with various bases.

3P: 3mm PVC edge
 GN: ganging

lam: Pionite AW871 Vanilla Fiber
 3P edge: TX098 Dusk Walnut
 base: 17 Creme



Elite is an elegant all-welded base that looks great in the conference room too.



08BT36120Y26T32-3K

Elite 36x48x120" boat-shaped table with two 26" Y-bases and a 32" T-base.

3K: 3mm PVC knife edge

lam: Wilsonart 7933K-07 Cafelle
 3K edge: F3026 Cafelle / K1595 Black
 base: 02 Black



Elite's unique L-bases give us the flexibility to build tables in nearly any shape and size.



08D6060L26-3P

Elite 60x60" D-shaped table with four 26" L-bases and Butterfly Popper power unit.

3P: 3mm PVC edge

lam: Wilsonart D354-60 Designer White
 3P edge: 354 Designer White
 base: 37 Satin Silver



Villa Daisylink power units make it simple to reconfiguring tables with power.

Elite nesting tables are easy to move, easy to store, and are also easy on the eyes.

elite bases



T



T-OS



TT



V



X



Y



L



XY

elite table options



locking casters



nesting T-bases



nesting TT-bases



flip top X-base



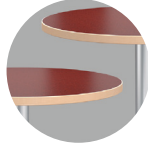
folding bases



built-in wire management



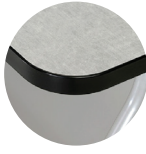
snap-on wire manager



custom height



quick connect ganging brackets



radius corners



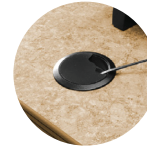
modesty panels



privacy panels



power units



grommets

elite top shape offering



rectangle



boat



elliptical



racetrack



D-shaped



square



round



squircle



trapezoid



half round

elite edge offering



tableX

tablex.com/elite

877.481.1177

Elite tables
© 2021 TableX, LLC
Form # TXBR-ELT-21



08TC2072T18-3P-LC
Elite 20x72" rectangular tables
with 26" wide T-bases.

LC: locking casters

lam: Wilsonart 4917-60 Kiwi
3P edge: 354 Designer White
base: 21 Silver Frost